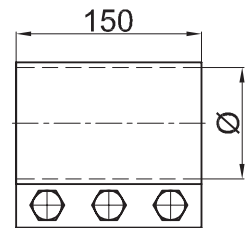
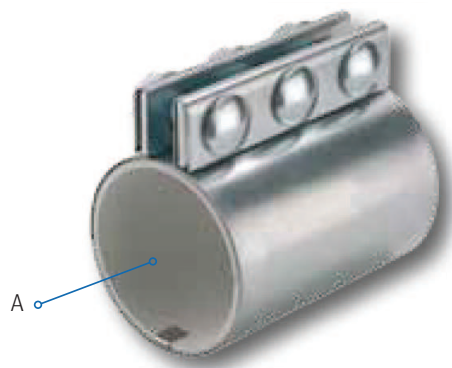


Typ 20 type 20

- Länge = 150 mm, 3 Schrauben
- Gummimanschette aus Naturkautschuk (weiß)
- Manschette verzinkt
- length = 150 mm, 3 screws
- natural rubber sleeve (black or white)
- galvanised or stainless steel sleeve



	Ø (mm)	A	max. C°
RV-20-050-150-3-02-VZ	50	NBR white	80
RV-20-060-150-3-02-VZ	60	NBR white	80
RV-20-063-150-3-02-VZ	63	NBR white	80
RV-20-065-150-3-02-VZ	65	NBR white	80
RV-20-070-150-3-02-VZ	70	NBR white	80
RV-20-076-150-3-02-VZ	76	NBR white	80
RV-20-080-150-3-02-VZ	80	NBR white	80
RV-20-084-150-3-02-VZ	84	NBR white	80
RV-20-085-150-3-02-VZ	85	NBR white	80
RV-20-089-150-3-02-VZ	89	NBR white	80
RV-20-095-150-3-02-VZ	95	NBR white	80
RV-20-100-150-3-02-VZ	100	NBR white	80
RV-20-102-150-3-02-VZ	101	NBR white	80
RV-20-104-150-3-02-VZ	104	NBR white	80
RV-20-108-150-3-02-VZ	108	NBR white	80
RV-20-114-150-3-02-VZ	114	NBR white	80
RV-20-125-150-3-02-VZ	125	NBR white	80
RV-20-127-150-3-02-VZ	127	NBR white	80
RV-20-129-150-3-02-VZ	129	NBR white	80
RV-20-133-150-3-02-VZ	133	NBR white	80
RV-20-139-150-3-02-VZ	139	NBR white	80
RV-20-154-150-3-02-VZ	154	NBR white	80

- Gummimanschette aus Naturkautschuk (weiß)
- Manschette aus Edelstahl

	Ø (mm)	A	max. C°
RV-20-089-150-3-02-CR	89	NBR white	80
RV-20-108-150-3-02-CR	108	NBR white	80
RV-20-114-150-3-02-CR	114	NBR white	80

- Natural rubber sleeve (white)
- stainless steel sleeve